

隆守初心冬铸良质



天津隆冬挖掘机配件有限公司  
Tianjin Longdong Co., Ltd.



ADD:3403 , Fuli Mataichicheng Hemoyuan,Tsunan District, Tianjin, China



# COMPANY

## 天津隆冬公司简介

### >>Profile

天津隆冬挖掘机配件有限公司，专业研发生产各类挖掘机全套配件及总成。主营涨紧弹簧，连杆以及四轮一带等耐磨配件，工艺精湛、用料扎实，品控严格。公司深耕工程机械配件领域，秉持精工质造、诚信经营的理念，专注打造高耐用、高适配的优质产品，可为工程施工、矿山作业等场景提供可靠配件配套与完善服务，广受客户信赖，产品广泛运用于矿山环境，远销海内外。我们遵循“品质为先，客户至上”的长久发展理念，追求产品品质，力求工艺创新、服务创新，竭力为客户提供高品质的产品和服务。

Tianjin Longdong Excavator Parts Co., Ltd. specializes in the R&D and production of a full range of excavator parts and assemblies. We mainly supply wear-resistant accessories such as tension springs, connecting rods, and undercarriage parts. With exquisite craftsmanship, premium materials and strict quality control, we have long been engaged in the construction machinery parts industry.

Adhering to the philosophy of exquisite manufacturing and integrity operation, we focus on developing highly durable and well-matched products. We provide reliable supporting parts and comprehensive services for construction, mining and other scenarios, winning wide trust from customers. Our products are widely applied in mining environments and sold at home and abroad.

We follow the long-term development tenet of Quality First, Customer Foremost, continuously pursue product quality, and strive for technological and service innovation to provide customers with high-quality products and services.



# ADVANCED PRODUCTION

## 天津隆冬先进的生产设备

>>equipment

采用高效的设备，打造一流品质的产品

先进的生产设备，完善的检测手段，严格的生产管理，是产品品质的保证。

从产品的研发、原材料采购、零部件加工工序、检验检测、包装验收以及产品交付等方面，整个生产流程严格按照国际标准质量管理体系实施。

Advanced production equipments, complete examination methods and strict production management is warranty of products quality.

Our company's product design, raw material purchase, product machining procedure, test and inspection, packing and acceptance etc, the entire production process all conform to the International standard quality management system.



# ADVANCED PRODUCTION

天津隆冬 | 实验检测设备

>>equipment

隆守初心  
冬铸良质

TianJin  
LongDong

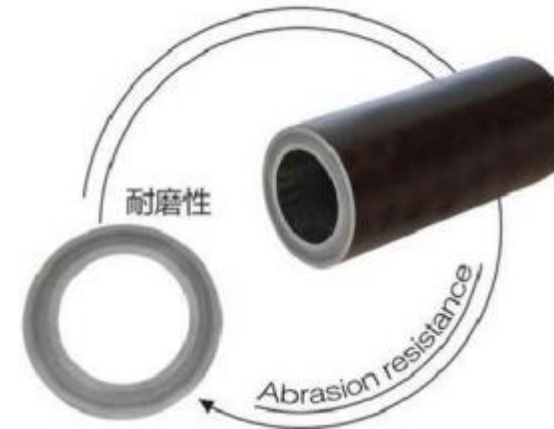


拳 链轨节经整体调质，中频淬火工艺，保证了其高强度及耐磨性。

拳 The track link has been done special hardening treatment which ensures its high strength and excenent abrasion resistance.

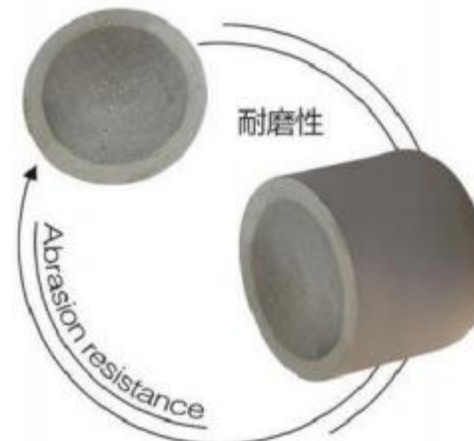
拳 感应硬化踏面

拳 inductive harden surface



拳 轴套经渗碳及表面中频淬火处理后，保证了合理的心部硬度和内外表面的耐磨性。

The bushing shaft has been carburized and quenched the surface with medium frequency,which guarantees its reasonable hardness of core and abrasion resistance of the innerl and outer surfaces.



拳 销轴调质后，经表面中频淬火处理，保证了足够的心部强度及外表面的耐磨性。

The pin shaft is quenched the surface with medium frequency after quenching and tempering,which ensures its sufficient core strength and wear-resistance of inner and outer surfaces.

# ADVANCED PRODUCTION

天津隆冬履带链条 品质保证◆客户至上

>>quality



# TRACK ROLLER

天津隆冬 | 支重轮

>>



我厂生产的D系列推土机和30吨及以上挖掘机的支重轮轮体全部精选40Mn2 元钢材料，采用750kg 空气锤上百次的锻打而成形毛坯工件(自由模锻，主要是极大地增加产品工件的密实度，所形成网状组织结构，提升其抗拉、抗压、抗磨)，经数控车床粗车后，再进行整体热处理调质、回火、使其工件微金属晶粒进一步优化。

The body of thrust wheel to D series bulldozers and 30 tons or more capacity excavators our factory manufactured are all used by selected 40Mn2 steel material,adopt the blank work-piece which are forged hundreds times by 750kg air hammer (free forging,which could fortify compactness to products vastly.And the net structure it formed,could improve its tensile,resist compression,anti-wear capacity)After the rough turning of CNC lathe,then heat treatment of hardening and tempering to entirety,make a further improvement to hair metal grain of work-piece.

# SPROCKET

天津隆冬 | 驱动轮

>>



我厂驱动齿圈毛坯采用35Mn2、材质铸造而成，经井式炉整体进行热处理调质，使其材质和密实度进一步优化，回火后硬度在28~32° 之间。再经过整圈中频热处理，齿尖到齿底根部表面硬度在50~55° 范围，深层可达0.5cm 以上。

Our driving gear ring work-blank is forged by material 350Mn2,after the whole pit type furnace and tempering heat treatment,To further optimize its material and compactness,after tempering hardness before 28~32°.After the whole circle of med-frequency heat treatment, the bottom of the tooth tip to the tooth root surface hardness could reach 50 to 55°, hardness thick could be more than 0.5cm.

# CARRIER ROLLER

天津隆冬 | 拖链轮

>>



托链轮采用50Mn 元钢经560kg 空气锤自由模锻成毛坯件，轮体的密实度进一步增加，热处理后表面硬度可达58~62° 深层0.5~0.8cm。

The carrier roller adopt 50Mn steel,after free forging into work-piece by a 560 kg air hammer,compactness of roller body further increased,after heat treatment,the surface hardness could reach 58-62°,hardness could be thick to 0.5~0.8cm.

# FRONT IDLER

天津隆冬 | 引导轮

>>

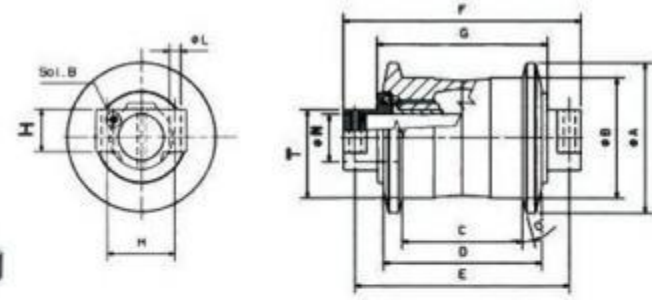


引导轮采用整体铸造，材质铸35Mn2、轨面中频热处理后、深层达0.8~1.2cm，两边侧板加厚及增加加强筋，滑块采用精密铸钢件(材质45#)。在矿山上使用更能体现产品的稳定性及使用寿命。

The front idler is in-block cast,material 35Mn2,after rail surface mid-frequency heat treatment,hardness could be thick to 0.8~1.2cm.Thicken on both side plate and increase stiffener,slider adopt precision steel (material 45#).Use in mine environment could more reflect stability and service life of products.

# TRACK ROLLER

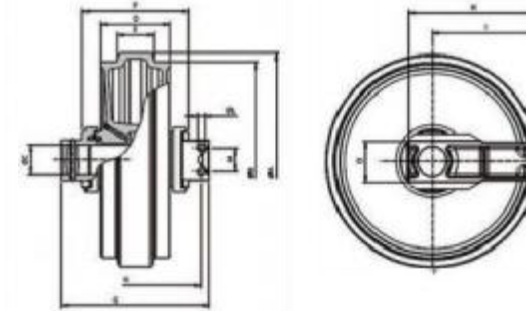
LONGDONG 支重轮



序号	型号	A	B	C/Cl	D	G	F	E孔距	M孔距	ΦL	H	N	T
1	PC30	112	85	26	120	161	168.5	161		14	25		
2	PC40	123	95	41	118	160	169	162		14	25		
3	PC60	139	110	43	130	137	240	204	90	15.5	45	47	92
4	PC120	163	135	123	150	176	276	240	107	18	50	50	102
5	PC200-5	188	156	174	226	225	350	310	110	19	55	60	115
6	PC300-5	212	178	198	250	256	390	320	114	21.5	63	70	135
7	PC400-5	240	200	210	276	265	412	366	136	24	80	80	150
8	PC650-6	260	220	246	320	360	482	430	135	26.5	110	100	180
9	EX55	122	95	54	142	142	200	190		18	21		
10	EX120	170	140	146	186	211	288	250	89	17	50	50	100
11	EX200-5	185	150	176	218	242	340	290	102	19	65	60	113
12	EX300-5	212	178	201	257	285	409	370	114	22	71	75	132
13	ZAX330	216	180	199	256	285	409	365	116	23.5	71	75	132
14	EX450	240	200	214	284	293	447	400	125	23.5	78	80	152
15	EX550	260	220	246	320	360	482	430	135	26.5	110	100	180
16	EX870	280	240	274	356	398	552	500	160	26.5	99	110	185
17	E70B	140	119	106	134	155	236	205	60	14	48	40	85.5
18	E120B	170	140	161	194	218	301	265.5	80	17.5	50	52	99
19	E320	185	150	176	226	242	335	296	98	21.5	65	60	113
20	E330	215	178	210	256	299	418	370	115	25.5	71	75	115
21	E324	195	160	176	218	241	358	319	106	22	59.5	65	118.5
22	E345	246	200	218	292	302	432	378	130	25	80	80	150
23	E350	250	210	250	320	342	484	420	130	25.5	81	85	155
24	E375	274	230	272	358	344	574	490	160	33	106	105	178
25	DH55	130	110	105	130	155	248	218	80	14	25	35	80
26	DH220	185	150	176	220	240	356	320	102	18	60	58	115
27	R60-7	130	105	51	145	145	215	199		18	26		
28	R305	216	180	199	248	256	390	330	114.3	22	65	65	135
29	SH60	144	118	44	151	151	238	224		20	22		
30	SH120	170	140	146	190	215	336	298	89	17.5	43	50	90
31	SH200	185	150	176	222	242	365	320	110	19.5	45	60	101
32	SH350	230	180	216	268	282	406	356	155	26	45	75	120
33	SH450	240	200	240	280	303	450	406	170	25	55	80	140
34	EC140	190	150	151	195	218	330	298.5	89	18	57	60	114.5
35	EC210	195	160	175	226	250	352	320	110	21.5	62	70	120
36	EC290new	212	178	198	250	256	390	335	120	21.5	63	70	135
37	EC360new	220	190	210	262	280	401	355	145	23	61	80	143
38	SK200	180	150	173	220	230	353	310	110	19.5	60	60	101
39	SK350	212	180	206	244	278	396	357.5	125	23.5	70	70	120
40	SK460	250	200	223	280	318	466	406	170	26	50	85	136

# FRONT IDLER

天津隆冬 | 引导轮

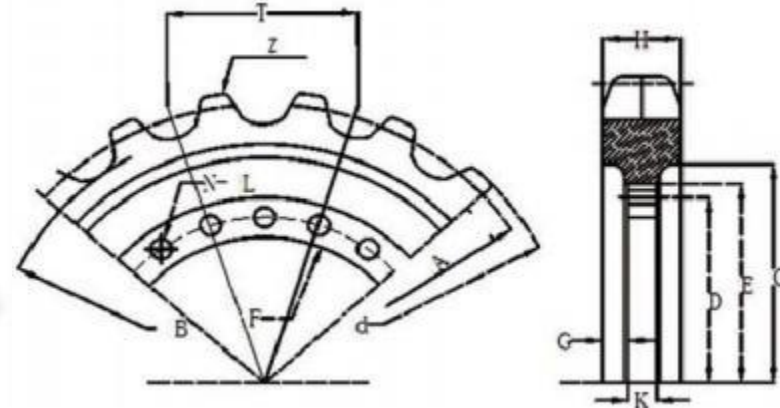


序号	型号	A	B	D	E	F	G	N孔距	M孔距	ΦL	Q	I	H	C
1	D7老款	523	490	135	61	190	265	220	45	4*M12	75	250	370	50
2	D7	522	490	125	55	160	245	205		2*M12	65	170	216	45
3	PC30	338	300	64	28		160	119	70	4*M12	94	182	227	35
4	PC40	370	335	75	39	155	160	119	70	4*M12	94	182	227	35
5	PC60	460	415	100	43	156	248	200	40	4*M14	73	242	284	50
6	PC120	527	489	115	52	183	266	227	44	4*M14	82	301.5	350	60
7	PC200-5	540	500	160	84	247.4	343	280	66	4*M16	105	196	252	65
8	PC300-5	630	590	190	105	260	408	360	60	4*M20	120	250	312	85
9	PC450	704	660	204	105	297	460	410	66	4*M20	145	275	390	105
10	PC650-8	760	716	234	116	324	450	380	90	4*M24	155	115	190	110
11	E312	480	450	130	70	185	256	216	46	4*M16	80	270	330	60
12	E320	540	500	160	80	208	343	270	60	4*M16	115	300	380	65
13	E324	545	505	165	84	206	342	250	60	4*M16	115	300	380	65
14	E330	681	636	214	97	214	415	350	60	4*M20	135	372	467	85
15	E345	675	635	202	101	270	374	324	80	4*M20	145	367	367	95
16	E385	818	770	266	127	344	480	360	110	4*M24	180	440	560	115
17	EX120	480	450	134	68	220	298	262	70	4*M16	98	80	135	65
18	EX200-5	540	500	160	86	236	351	287	64	4*M16	108	80	135	75
19	EX300-5	617	570	204	103	262	375	324	70	4*M16	118	132	186	85
20	EX450	670	630	205	107	272	390	330	85	4*M20	145	114	230	110
21	EX470	670	630	205	107	272	390	330	85	4*M20	145	230	345	110
22	EX650	761	716	234	116	324	450	380	90	4*M24	155	115	190	110
23	EX800	845	800	260	126	330	480	400	90	4*M24	156	233	116.5	120
24	DH55	384	360	98	48	160	226				90	60	104	45
25	DH220	540	500	160	80	214	350	286.5	64	4*M16	108	85	135	65
26	DH500	670	630	205	107	290	430	360	65	4*M20	120	290	392	95
27	SH120	540	500	140	68	190	300	265	80	4*M16	110	20	82	60
28	SH200	540	500	160	80	208	321	285	90	4*M16	120	100	100	65
29	SH350	630	590	203	103	260	380	345	90	4*M16	130	102	205	80
30	SH450	702	660	205	104	278	420	386	120	4*M16	170	130	245	110
31	EC210	540	500	160	85	260	340	300	65	4*M16	105	330	381	70
32	EC360	630	590	210	102	290	428	360	65	4*M16	108	290	360	85
33	EC460	670	630	205	107	290	430	360	70	4*M20	130	315	385	100
34	SK230	540	500	160	84	222	321	280		2*M16	100	248	322	65
35	SK350	630	590	203	103	288	381	320		2*M20	130	277	377	85
36	SK460	702	660	205	104	304	440	364		2*M22	160	265	380	110
37	R225-7	560	520	160	85	266	360	310	66	4*M16	110	213	305	70
38	R305	630	590	210	102	290	428	360	65	4*M16	120	290	360	85
39	R916	590	550	175	85	230	340	300	60	4*M16	110	250	360	75
40	R934	620	570	158	82	250	360	320	65	4*M16	110	250	326	80
41	R944	652	602	102	200	290	400	350	65	4*M16	110	250	326	80
42	JCB300	590	545	102	203	250	363	300	65	4*M16	100	290	266	80
43	R200改	595	545	185	80	254	345	305	55	4*M16	105	330	405	68

# SPROCKET

## 天津隆冬 I 驱动轮

>>



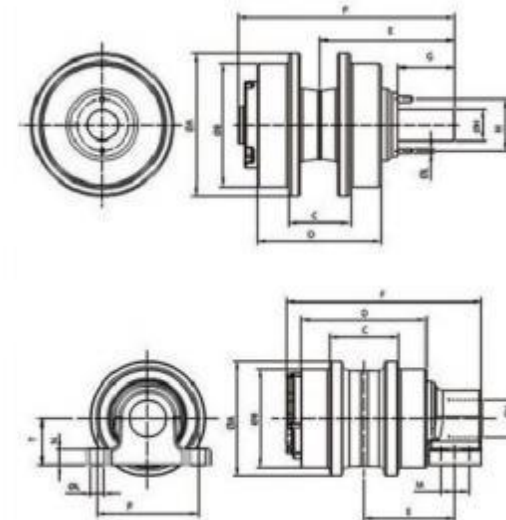
序号	型号	T	A	d	B	C	E	D	F	K	H	G	N孔数	ΦL	Z齿数
1	PC30	101	381	370	333	318	301	315	210	15	27	6	9	14	23
2	PC40	135	426	415	380	347	347	253.5	230	13.5	35	11	9	15.5	19
3	PC60-5	135	512	500	455.6	428	360	300	265	17	38	12	12	17	23
4	PC60-7	154	524	522	472	374	376	300	265	14	34	10	12	17	21
5	PC120	175	606	595.1	545.5	515	410	364.5	324	16	42	20	15	17.5	21
6	PC200-5	190	606	644.6	584	558	550	506	475	18	73	42	20	19	21
7	PC300-6	216	745	733	666	607	607	525	525	20	85	18	20	21	21
8	PC450	228	800	776	699	658	625	607	564	21	92	47	26	21	21
9	E312	171	581	578	510	484	403	364	324	18	80	16	15	17	21
10	E120	171	594	580.1	528	495	430	388	346	20	55	17	15	17.5	21
11	E200B	190	663	644.6	581	540	515	455	415	22	64	19	14	22	21
12	E330	216	815	800	726	625	625	566	515	28	80	25	16	25	23
13	E345	216	810	801	727	690	680	625	578	30	87	16	20	25.5	23
14	E350	228	860	845	770	720	720	656	596	25	103	52	20	26	23
15	E374	260	900	880	795	795	730	665	607	35	115	51	21	31.5	21
16	EX120	171	592	580.4	527	493	436	396	356	16	64	24	16	18	21
17	EX200-2	190	656	644.6	584	552	526	480	432	17	71	22	16	22	21
18	EX200-3	190	656	644.6	585	522	528	465	420	21	74	29	16	21.5	21
19	EAX240	190	664	649	584	554	511	464	419	21	74	29.5	18	22	21
20	EX300-5	216	745	732.5	655	620	575	530	481	24	88	57.5	20	21.5	21
21	ZAX330	216	742	733	660	600	600	534	484	25	90	31	22	23.5	21
22	EX450	216	821	800	728	675	655	605	556	28	90	36	27	24	23
23	EX650	228	858	847	765	689	689	636	585	30	102	36	24	24	23
24	EX870	260	988	965	873	813	790	730	668	35	113	36	24	29	23
25	SH120	171	645	634	580	544	410	364.5	324	20	55	17	15	17.5	23
26	SH200	190	655	644.6	580	530	480	440	403	22	64	19	22	17.5	21
27	SK100	171	598	580.4	528	510	405	364.5	324	19	48	22	15	18	21
28	SK200-3	190	660	644.6	580	530	480	440	403	22	64	19	22	17.5	21
29	SK230	190	654	645	572	530	536	450	410	25	62	19.5	26	19.5	21
30	SK350	216	750	733	658	604	604	492	450	25	85	32	26	21.5	21
31	SK460	228	856	830	764	704	680	820	570	30	80	31	24	26	23
32	DH55	135	466	458	412	322	322	282	250	13	40	17	12	17	21
33	DH220	190	653	645	574	520	483	440	403	22	68	19	22	18	21
34	DH300	203	766	752	683	643	545	490	450	26	80	36	24	22	23
35	DH420	216	740	733	658	610	590	535	490	29	90	32	28	22	21
36	DH500	216	810	800	725	669	580	510	460	35	83	21	24	21	23
37	EC360	216	742	733	652	598	540	490	450	25	88	50	24	21.5	21
38	EC460	216	818	801	726	670	566	510	460	25	90	52	24	21	23
39	SY335	216	742	731	652	598	490	540	450	25	88	50	26	21.5	21
40	SY331	216													
41	XG370	216													

# CARRIER ROLLER

## 天津隆冬 I 拖链轮

>>

序号	型号	A	B	C	D	E	H	T	P孔距	M孔距	L	G	F	N
1	PC40/EX55	89	89		100	57.5	30					50.5		
2	PC60_5	140	120	45	120	100.5	45	72	100	42	14			
3	PC60_7	80	80		102	76	35					35		
4	PC120	120	120		120	100.5	45	72	110	42	14			
5	PC200-5	160	135	80	164	113	55					78.5		
6	PC200_7	146	120	84	170	125	40	36	68	35	18			
7	PC300-5	200	168	96	210	117.5	57					90		
8	PC300_7	188	160	95	194	110	54					105		
9	PC450	198	168	96	202	116	54					98		
10	EX120	140	120	68	120	105	45	53	110	35	14			
11	EX200-5	140	120	80	150	113	45	54	124	35	18			
12	ZAX240	140	120	80	164	123.5	45	50	90	35	17			
13	EX300_5	140	120	100	166	121	45	57	124	35	17			
14	EX450	190	160	103	190	165	60	56	140	65	19			
15	EX650	210	181	115	220	215	70	100	160	70	21.5		313	39
16	EX870	240	210	116	260	195	85	180	170	85	24		390	46
17	E70B	104	85	44	109	71.5	30					46		
18	E312	130	108	68	142	103.5	41.3					55		
19	E320	140	120	80	164	106	47					85.5		
20	E330	190	160	94	194	113.5	47					75		
21	E345	220	190	103	220	214	77					80		
22	E350	223	191	118	240	231	77					90		
23	E374	227	190	125	166	275	77					135	408	
24	SK120	98	98		130	84.5	40					48		
25	SK200-6	140	120	84	150	92.5	51					80		
26	SK230	140	120	84	150	96	46					82.5		
27	SK350	140	120	95	205	200	65					70		
28	SH60	108	80	44	107	63	30					28.4		
29	SH120	140	118	68	128	118.5	45	48	120		18			
30	SH200	145	120	80	164	118.5	45	50	140		22			
31	SH350	180	160	96	228	175	60	50	145	55	45	19.5		
32	DH220	160	135	84	174	153	45	116	124	50	18			
33	DH300	176	142	98	188	156	55	93	132	50	18			
34	EC240	170	140	84	170	114.5	57.2					80.5		
35	R130	175	150	70	168	95	41.2					87		
36	YC85	120	90	50	108	74	35					42		
37	SWE55	106	80	37	100	62	30					32		
38	SEW70	82	82		100	70	35					44		
39	LG60	83	83		120	60	34.5					67		
40	LG215	170	142	82	170	120	56					70		

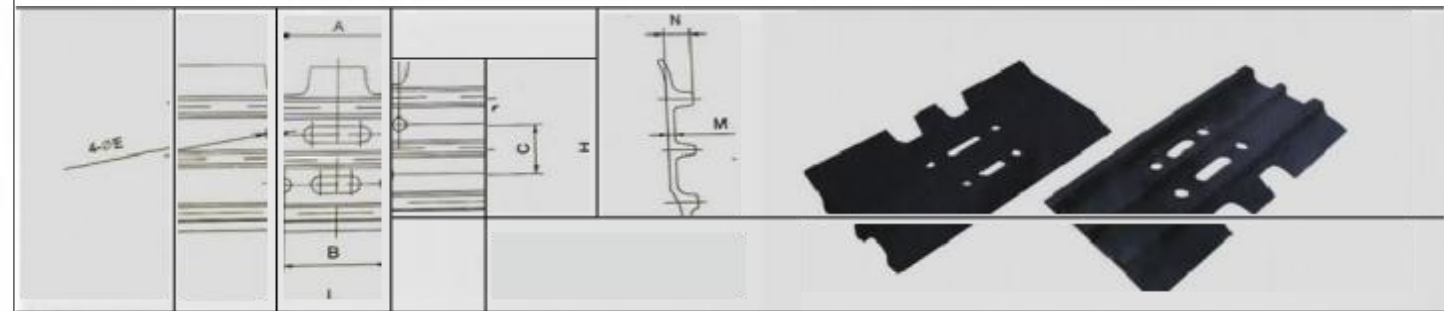


# 挖掘机用履带板主要技术参数

Technical parameter of Excavator track shoe



序号	型号	A	B	C	E	H	L	M	M	适用机型
1	W90GA					94	230	5	20	SK15
2	W101GA	55	55	22	10.5	109	300	6	22.5	EX30 PC30
3	W135GA	99	72	43.2	12.5	157	400	7	20.5	PC60-5
4	W135GB	104	80	46	12.5	157	400	7	20.5	R60 E55
5	W135GC	98.4	74.4	46	12.5	157	400	7	20.5	YC60
6	W135GD	106	76	47	12.5	157	400	7	20.5	E70B
7	W140GA	86	86	52	14.5	163	400	7	28	YC85
8	W140GB	94	94	52	12.5	159	305	8.5	45.5	D7
9	W149GA	84.2	84.2	57	12.5	159	255	8.5	45.5	CW341 ECM350
10	W154GA	89	73	57	14.5	165	450	6.5	26	PC60-6 PC75
11	W154GB	90	90	55	14.5	165	450	8.5	28	EX60-1
12	W154GC	112.4	82.4	57	14.5	165	500	8.5	28	FR85 PC100-3
13	W160GA	99	99	53	14.5	187	450	8	26	FL6
14	W171GA	144.5	125.4	58.7	16.5	190	600	8.5	26.5	R200
15	W171GB	108	108	60.3	16.5	190	500	8.5	26.5	E120B EX120
16	W175GA	144.5	125.4	58.7	18.5	198	600	9	34.5	EX200-1
17	W175GB	102.4	86.4	57	16.5	198	500	9	34.5	PC100-5 PC120
18	W175GC	158.4	122.4	57	18.5	198	600	9	34.5	HD700 DH800
19	W190GA	160.4	124.4	62	20.5	219	600	10	36	PC200-5 DH220
							800			
20	W190GB	155.6	119.6	69	20.5	219	600	10	36	E200B SK200
							800			
21	W191GA	160.4	124.4	62	18.5	219	600	10	36	PC200-3 EX200-5
22	W203GA	178.4	138.4	72	20.5	236	600	13	41	EX300-1 DH300
							800			
23	W203GB	179	129	72	20.5	236	600	13	41	E325
24	W203GC	184	146	76.6	20.5	236	600	13	41	R944
25	W216GA	178.4	140.4	76.2	22.5	247	600	13	49	PC300-6 EX300-5
							800	13	49	
26	W216GB	184	146	76.2	24.5	250	600	14	44	PC400-5 EX300-5
							800	14	44	
27	W216GD	190	140	76.2	22.5	250	600	14	44	E330
28	W216GC	184	146	76.2	22.5	250	600	14	44	PC400-1 EC360
							800	14	44	
29	W228GA	184	144	76.2	24.5	248.5	600	16	53	PC400-6 SY465
30	W228GB	200	149.2	76.2	24.5	248.5	600	16	53	SK460 CX470
31	W260GA	234.9	184.1	76.2	27.5	295	650	20.5	68.5	EX870 EC700
32	W260GB	234.9	184.1	76.2	30.5	306	700	23.5	73.5	E385 EX1200
33	W280DA	256.6	183	79.5	34	306	710	23.5	73.5	PC1250-7

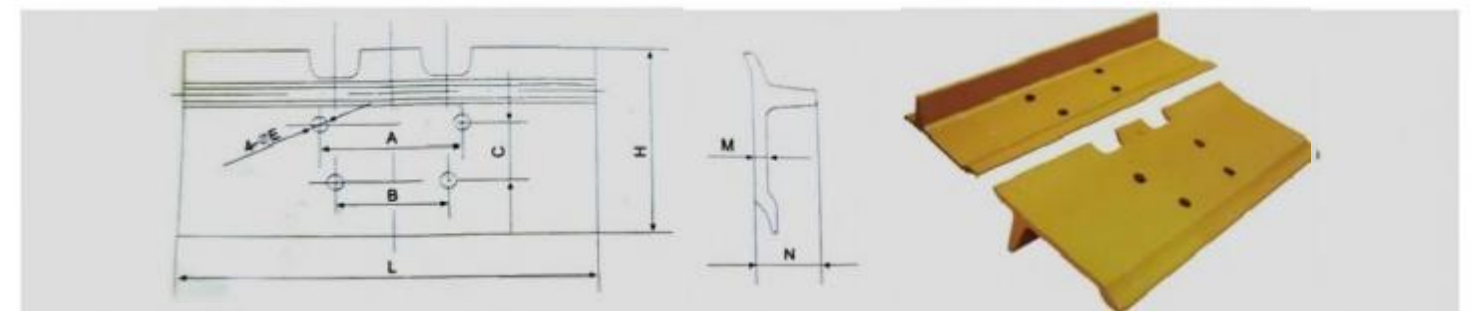


# 推土机用履带板主要技术参数

Technical parameter of Bulldozer track shoe



序号	型号	A	B	C	E	H	L	M	M	适用机型
							260			
1	T135MA	99	72	43.2	12.5	135	300	7	42	D20 D21
							510			
2	T140GA	86	86	53	12.5	135	450	7	42	FL4
3	T154MB	112.4	82.4	57	14.5	159	300	8.5	45.5	D30 D31
4	T171MB	144.5	125.4	58.7	16.5		460			D5 D6 T100
						200	660	12	61	
5	T171MC	144.5	125.4	58.7	18.5		600			T100
6	T175MC	158.4	122.4	57	16.5		450			D50 D53 TY100
7	T190MA	160.4	124.4	62	20.5					SD13
8	T190MC	160.4	124.4	62	20.5	215	460	12.5	63	D55 D57
9	T190MD	160.4	124.4	62	20.5					D55 D57
10	T190ME	139.7	139.7	63.5	19.5					TD15C
11	T203MA	184	146	72	20.5		500			T120 T140
12	T203MB	178.4	138.4	72	20.5		510			T160*38/43
13	T203MC	178.4	138.4	72	19.5	232.5	560	12	77	D60A D65A TY160
14	T203MD	184	146	76.2	20.5		600			T120
15	T203ME	171.4	133.4	76.2	19.5		610			D6C
16	T203MG	185.3	137.3	68	20.5	243	510	15	90	D6H
							560			
							610			
17	T216MA	184	146	76.2	19.5		560			SD7 D7G
						250	610	14	86	
18	T216MB	184	146	76.2	20.5		560			D85 TY220 TY230 D75S D96S
							610			
19	T228MA	219.8	169	76.2	24.5		560			D155ATY320SD8D150A D155C
							610			
20	T228MB	201.6	169.8	76.2	23.2	268	710	17	97	D8H D8K
							760			
21	T240MA	230	170	74.5	26.5		610	17	97	D9R
22	T250MA	256	206	88	27.5	305	560	20.5	113.5	T250-3
23	T260MA	250	190	80	30.5		610			D10N
24	T280MA	253.4	184	82.5	30.5	322	610	23	116	D375
25	T317MA	291.5	225.5	94	36	369	710	25	127	D11N



# 挖掘机链轨技术数据表

## Parameter for Excavator track link Assembly



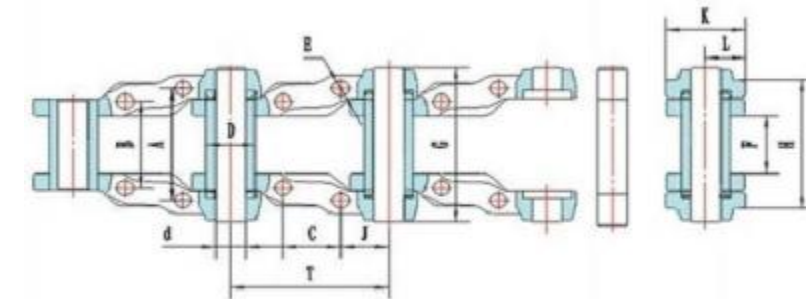
序号	型号	T	A	B	c	D	d	ΦE	F	G	H	J	K	L	通用机型Machine	
1	W101GA	101	55	55	22	32	19	10	5	35	94	76	40	63	37	EX30 PC20/30 YC35*43L
2	W135GA	135	85	55	46	35	22.5	12.5	31.6	114	78.6	41	65	35	PC40-5	
3	W135GB	135	93.8	63.8	46	35	22.5	12.5	40.4	124	87.4	41	65	35	PC40-7*40L PC55	
4	W135GC	135	99	72	3.2	1	24	12.5	44	141	108	42.5	75	40	PC60-5*42L DH55*42 SH60 E307 SEC70HD250	
5	W135GD	135	99	72	3.2	39.2	22.5	12.5	44	141	108	42.5	75	40	DH55*40L	
6	W135GE	135	106	76	47	41	24	12.5	44	141	108	2.5	75	40	E70B*42L E307	
7	W135GF	135	104	80	46	35	22.3	12	53.6	141	108	40	67	36	R60-5*40L ZAX55 IHI55	
8	W135GH	135	88.4	64.4	46	35	22.3	12	41	123	89	40	65	36	SEC50*39L	
9	W135GI	135	98.4	74.4	46	35	22.3	12	51	133	99	40	65	36	YC60-5*41L	
10	W140GA	140	86	86	52	40	28	14.5	55	139	115	44	75	40	YC85*42L	
11	W154GA	154	90	90	55	46.3	30	14.5	56	158	127	47.5	80	42	EX60*37L	
12	W154GB	154	89	73	57	41.2	24	14.5	45	130	104.2	44	74	40.5	PC60-67*38L EX70*38 SK60 SH70HD307柳工907	
13	W154GC	154	112.4	82.4	57	46.3	30	14.5	49.4	161	125.4	44	87	47	PC100-3*46L HD350*43L LV85*39	
14	W154GD	154	74	74	55	46.3	30	14.5	56	152	127	47.5	80	42	JBT185	
15	W160GA	160	99	99	56	45	30	14.5	64	161	135	52	83	46	D9	
16	W171GA	171	108	108	60.3	47	30	16.5	58.6	170	129	55.57	90.2	49.5	SK100*41L SK120*44L	
17	W171GB	171	108	108	60.3	50.3	33.5	16.5	70	181	144.8	55.57	95	51	EX120*43LE312 E120B SH120*44L ECI40*46L HD450	
18	W171GC	171	144.5	125.4	58.7	54	36.65	16.5	83.5	212	167.5	56.3	101.6	58.8	R200*50L SE210-1SE210LC*54L R210LC-2 S280	
19	W175GA	175	102.4	86.4	57	46.3	30	16.5	50.4	170	122.4	54	86	47	PC120-5*42L SK04 PC150-3*4 SY120 SY150	
20	W175.4GA	175.4	144.5	125.4	58.7	58.75	36.5	18.5	77.5	214	170	57.2	103.2	60	EX200-1*48L SH280*49L	
21	W190GA	190	155.6	119.6	69	58.8	36.6	20.5	82.2	220	174.2	58	106	60	E2 00B*45L SH200*46LHD820*48LE324SK260*51L	
22	W190GB	190	160.4	124.4	62	59	38	18.5	81.6	220	174	58	105	58	PC200-3*46LEX200-2/5*46L ZX210*46L R934	
23	W190GC	190	160.4	124.4	62	59	38	20.5	81.6	220	174	58	105	58	PC200-5*45L DH220*49L R225EC210SY200C EX240	
24	W203GA	203	178.4	138.4	72	66.8	44.6	20.5	101.6	244	201.6	58	116.4	64.4	EX300-1*47L DH300*51L R290 HD1430*48L	
25	W203GC	203	179	129	72	64	42	20.5	94	235	194	62	115	64	E325*45L SK220-6 TY260(宇通旋挖)*56L	
26	W203GE	203	186.2	148.2	76.2	66.8	44.6	19.5	112.4	254	212.4	58	116.4	64.4	R944*51L FH300	
27	W203GC	203	163	113	72	64	42	20.5	94	218	194	62	115	64	R934 ATLASD336	
28	W216GA	216	178.4	140.4	76.2	66.5	44.6	22.5	101.6	242	197.6	63	116	64	PC300-6*45L PC360 EX360 R305	
29	W216GB	216	184	146	76.2	71.6	47	22.5	106	252	209.2	63	129	70	EX400-1*49LDH500*53LEC360*50L R450 DH370	
30	W216GC	216	190	140	76.2	68	46	22.5	103	248	211	69	124	68	E330*45L SK330 SK350*48L E330LC*49L	
31	W216GC	216	184	1146	76.2	71.6	47	24.5	106	252	209.2	63	129	70	PC400/549L EX450*49L EC460*52L EX470*53L	
32	W228GA	228	184	144	76.2	71.6	47	24.5	109	254	210	71.4	129	70	PC400-6*46L PC450*46L SY460*49L	
33	W228GB	228	200	149.2	76.2	74.3	49	24.5	112	264	214	71.4	131	72	SK460*50L CX470 SH450	
34	W260GA	260	235	184.2	76.2	85.3	57.3	27.5	133	321	266.2	87.3	152	79	D355*39L EX870*47L EC700 E375	
35	W280GA	280	256.6	183	79.5	100	60.2	34	130.8	331	306.4	91.5	181	105	PC1250*48L	

# 推土机链轨技术数据表

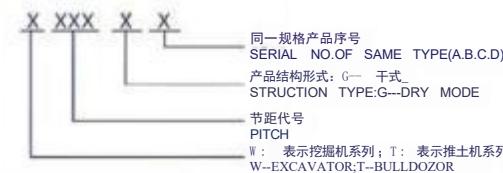
## Parameter for Bulldozer track link Assembly



序号	型号	T	A	B	C	D	d	ΦE	F	G	H	J	K	L	通用机型Machine
1	W135GC	135	99	72	43.2	41	24	12.5	44	141	108	42.5	75	40	D20
2	W149GA	149	84.2	84.2	57	38	25	14.5	55	139	115	45	77	41.8	CW341 ECM350
3	W154GA	154	74	74	55	46.3	30	14.5	56	152	127	7.5	80	42	JBT185
4	W154GC	154	112.4	82.4	57	46.3	30	14.5	49.4	161	125.4	44	87	47	D31*39L HD350*43L LV85*39
5	Z140GA	140	94	94	53	42	30	12.5	58	145	122	44	80	45	ATLAS D7*50L
6	Z160GA	160	99	99	56	44.7	29.7	14.5	62	160	130	52	85	47	SANDVICK DX700*43L ATLAS D9*44
7	T155GA	155.6	88.9	88.9	57.15	43.22	28.9	12.5	59.4	157	125	9.2	76.2	413	TPJ1250 CAT933C
8	T155GB	155.6	104.8	88.9	54.8	47.1	28.55	14.8	60	159	127.9	48.7	88	49	D3C
9	T171GB	171	143.8	103.8	57	56	33.5	18.5	74.8	190	137.7	54	98	55	D4H
10	T175GA	175	158.4	122.4	57	55.26	36.6	18.5	84.6	214	73.2	54	101.5	56.5	D40 D50 HD700
11	T175.4GA	175.4	144.5	125.4	58.7	58.75	36.5	16.5	77.5	214	170	57.2	103.2	59.7	D5 D5B
12	T203GA	203	178.4	138.4	72	69	44.6	20.5	101.6	244	201.6	58	116.4	64.4	D65 SD16
13	T203GB	203	185	137.3	68	70	44.6	20	101.3	232	193.2	4	125	72	D6H D6R
14	T203GC	203	171.4	133.4	76.2	66.7	44.6	19.5	102.4	232	193.2	58	121.5	69	D6D D6G
15	T203GD	203	184	146	72	66	44.6	20	108	252	208	60	115	63	T140*37L T160
16	T216GC	216	184	146	76.2	73.4	47	19.5	106	252	209.2	63	129	70	D80 D85 SD22
17	T216GC	216	204.1	146.1	63	81.5	7.7	23	104	252	226	68.8	150	85	D8N
18	T228GB	228	201.6	169	9.8	76.2	50.8	23	124.4	292	246.8	71.4	138	78	D8K
19	T228GA	228	219	169	76.2	79	48.5	24.5	121.6	292	244	71.4	138	78	D155*41 E350 TY320-41
20	T240GA	240	230	170	74.5	85	50.9	26.5	103	290	245	71.4	138	78	D9N
21	T2501	250	80	80	80	50	36	14	50	131	110	85	102	50	SCD800槽式输送机
22	T2502	250	100	100	80	60	44.13	14	60	165	140	85	110	55	SCD1000槽式输送机
23	T260GA	260	235	184.2	76.2	85.3	57.3	27.5	133	321	266.2	87.3	152	79	D275 D355*39L
24	T260GB	260	250	190	80	95	57.3	30.5	135	320	309	83	181	105	D10N*44L
25	T280GA	280	256.6	183	79.5	100	60.2	34	130.8	331	306.4	91.5	181	105	D375
26	T317GA	317.5	288	222	96	116	70.4	33.8	155	373	357	103	199.5	110.5	D75A-1 D475A-2
27	T317GB	317.5	288	222	96	116	70.4	33.8	155	367	330	103	199.5	110.5	D475A-5
28	T317GC	317.5	291.5	225.5	94	110	66.75	36	147	363	349	102.5	198	110	D11N
29	W203GB	203	185	135	72	64	42	20.5	100	238	200	62	115	64	卡特山工816
30	W203GA	203	183.5	143.5	72	66.8	44.6	20.5	106.5	244	206.5	58	116.4	64.4	宝峨钻机



产品型号表示方法：  
TYPE DENOTATION



# 挖掘机涨紧弹簧数据表

## Tension Spring Data Sheet for Excavator



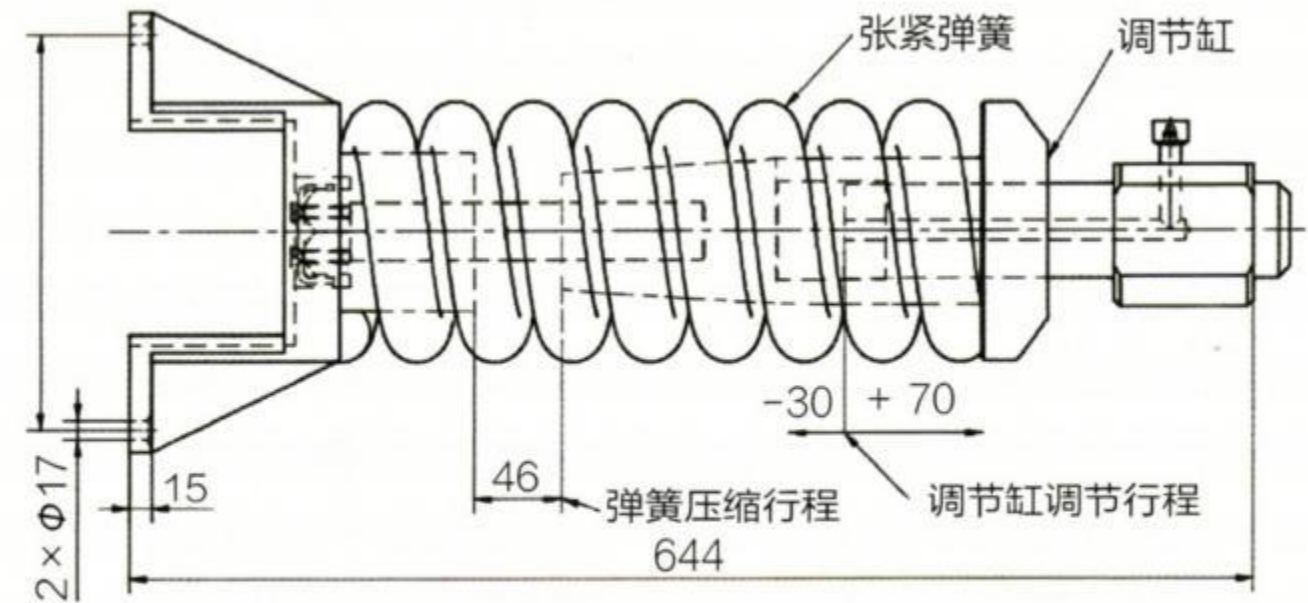
序号	弹簧型号	直径*内径*高度*圈		弹簧型号	直径*内径*高度*圈
DAEWOO	DH80	30*90*450*9	Komatsu	PC56	25*70*350*8
	DH150	40*110*520*8		PC60	30*85*400*9
	DH225	45*115*600*9		PC60	35*85*400*8
	DH225	45*115*600*10		PC120	35*105*500*9
	DH300	50*140*730*10		PC120	40*105*480*8
CATERPILLER	E305	25*105*310*9		PC200	45*145*600*8.5
	E320C	45*125*505*8		PC200	45*145*600*8
	E320C	48*125*505*8		PC200	50*145*580*8
	E320D	50*130*660*9		PC200	55*145*580*8
	E324D	50*126*680*10		PC360	50*150*810*10
	E329	50*135*810*11		PC360	55*150*810*10
	E349	60*129*980*11		PC400	60*150*850*10
VOLVO	E374	60*250*1450*14.5		R225	50*140*580*7.5
	EC140	35*110*450*9		R265	50*145*620*8
	EC210	50*130*520*7.5		R60	25*50*340*10
	EC210	45*140*560*8	R60	30*50*340*9	
	EC290	55*126*680*8	Sumitomo	SH200A3	50*105*660*10
EC55	25*65*310*9	SH350		55*120*890*11	
HITACHI	EX55	22*65*300*9	KOBELCO	SK140	35*95*450*9
	EX70	28*81*345*8		SK350	55*145*700*8
	EX120	35*95*500*9		SK60	25*77*345*9
	EX120	35*95*500*10	YUCHAI	YC35	20*55*260*9
	EX200	45*115*680*11		YC35	25*55*260*8.5
	EX200	45*115*630*10		YC85	30*80*380*8
	EX200	45*115*630*9	Sany	三一55	28*65*320*8
	EX400	60*155*720*9		三一485	60*155*1070*11.3
	ZAX200	45*126*620*10	SUNWARD	山河70	30*60*330*8
	ZAX200	45*126*620*9	CASE	凯斯55	25*107*450*13.5
	ZAX330	55*140*710*10			
	ZAX330	55*140*710*9			

# 推土机涨紧弹簧数据表

## Bulldozer Track Tension Spring Data Sheet



序号	弹簧型号	直径*内径*高度*圈		弹簧型号	直径*内径*高度*圈
1	6S-3363	35*190*610*10			
2	2Y-6912	38*206*660*9.5			
3	161-2627	42*229*710*9			
4	3P-1465	45*240*790*8.5			
5	8G-4958	48*256*760*8.5			
6	251-8608	50*260*775*8.5			
7	251-8609	55*280*810*8.5			
8	314-2518	60*280*850*8.5			
9	3P-1459	42*224*655*8.5			
10	3p-1885	52*244*820*8.5			
11	8E-2112	60*165*910*9			
12	248-7194	35*185*480*9			



# 工字架系列 BUCKET LINK SERIES



工字架  
BUCKET LINK SERIES



000000



000000





# WHEEL BOLTS

## 天津隆冬I 轮胎螺栓系列

>>



高强度轮胎螺栓High strength bolts



轮胎螺栓Wheel Bolts



轮胎螺栓Wheel Bolts



轮胎螺栓Wheel Bolts



轮胎螺栓Wheel Bolts



轮胎螺栓Wheel Bolts



轮胎螺栓Wheel Bolts



轮胎螺栓Wheel Bolts



轮胎螺栓Wheel Bolts

# OTHER ACCERRORIES

## 天津隆冬 I 其他配件

>>



高强度螺丝High strength bolts



耐磨斗轴套Bushing



斗轴pin



斗连杆Link Rod



护链器 Track Guard



千秋架Support arm



斗臂油缸Excavator Oil Cylinder



锻造斗齿Forging bucket tooth



张紧总成Tensioner assembly